



1-3/4" THICK STANDARD TONGUE & GROOVE JOINT TRUE THERMAL BREAK USES STANDARD HARDWARE R-VALUE=16

# Miltown Collection

INSULATED RESIDENTIAL GARAGE DOORS

THE MILTOWN COLLECTION combines style and durability with environmental friendliness and possesses many features which make it a perfect solution for both cold-weather and warm-weather climates. Polyurethane insulation is foamed in place, which ensures a consistent density and significant panel strength. 1-3/4" thick with an R-value of 16, the Miltown Collection contains a standard tongue and groove joint and a true thermal break.

Miltown Collection is available in 3 design choices. The raised panel mirrors the style of a traditional garage door, the ribbed panel resembles horizontal wood planks and the carriage house panel design offers an authentic replication of a high-end wood garage door.



LIFETIME  
LIMITED WARRANTY

MAXIMUM  
R-VALUE - 16

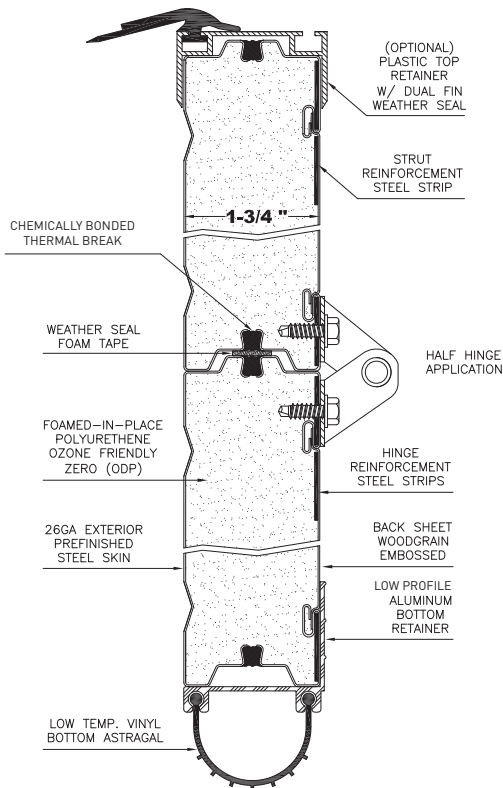


# Specifications

## SELECTION GUIDE

<b>Thickness</b>	1-3/4"
<b>Exterior Panel Pre-finished Colours:</b>	Wood Grain Embossed 26-Gauge
<b>Wood Grain Print:</b>	Stucco Embossed
<b>Interior Steel Backsheet:</b>	Stucco Embossed
<b>Insulation Type/Foam Process:</b>	Zero ODP Polyurethane/Continuous
<b>R-Value/U-Value:</b>	16.3/0.06
<b>Thermal Break:</b>	Chemically sealed & bonded
<b>Section Joint:</b>	Tongue & Groove
<b>Horizontal Reinforcement Strip:</b>	20-Gauge (3 per panel)
<b>End Stiles – Galvanized:</b>	20-Gauge
<b>Maximum Standard Width:</b>	18'0" (5486mm)
<b>Maximum Standard Height:</b>	3" increments
<b>Section Height:</b>	18", 21" & 24"***
	***woodgrain colours available in 18" & 21" only
<b>Limited Warranty:</b>	Lifetime
<b>Hardware Warranty:</b>	1-Year

## Side View Illustration



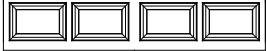
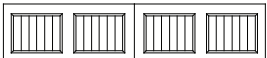

**Tamper Resistant Safety Bottom Bracket** eliminates tampering of cable while under tension to prevent accidental injury.

# Windows

- a) Bronte Creek with Yorkland Window
- b) Sheridan with Watertown Insert
- c) Bronte Creek with Stockton Insert



## Panel Choices

- A) SHERIDAN (RAISED PANEL) 
- B) BRONTE CREEK (CARRIAGE HOUSE) 
- C) TRAFALGAR (RIBBED PANEL) 

## Colours

				ACTUAL DOOR COLOUR MAY VARY SLIGHTLY FROM THESE RENDITIONS.
WHITE	ALMOND	SANDTONE	BROWN	
				
LIGHT OAK	WALNUT	MEDIUM OAK	ROSEWOOD	



UPWARDOR® CORP. 8025 Lawson Road Milton, Ontario L9T 5C4  
 T 905.876.3667 F 905.876.3533 sales@upwardor.com www.upwardor.com

Upwardor® and *MyLittle3000* are Registered Trade Marks of Upwardor Corp. Duplication is prohibited without express written consent of Upwardor Corp. Upwardor® reserves the right to change designs and specifications for design and quality improvements without notice and/or without incurring obligations. Revision 05.2004. ©2004 Upwardor® Corp.

INTERNATIONALLY PATENTED.

Distributor info: